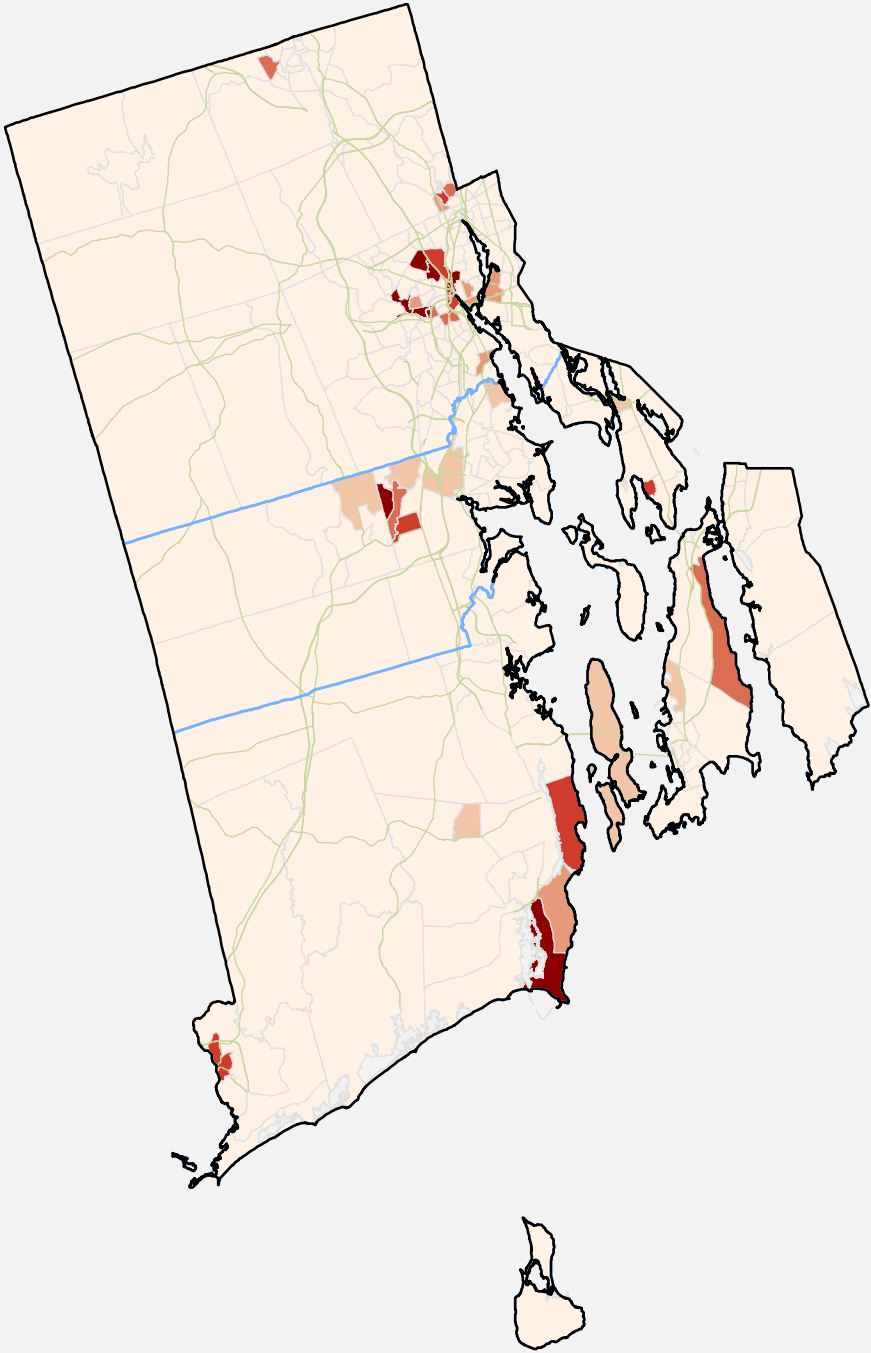


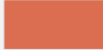



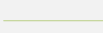
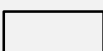
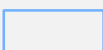


Rhode Island 2016 Potential Areas for Addressing Service Gaps for Opioid Treatment

Data Sources:
Drug Use: NSDUH (2012)
Facilities: SAMHSA (2016)
Population: ACS 5-year average (2010-2014)



Optimal Areas

-  Quintile 5
-  Quintile 4
-  Quintile 3
-  Quintile 2
-  Quintile 1
-  Non-Optimal Area
-  Roads
-  State Boundary
-  County Boundary